

Master's programmes of international standard

CSC School of
Computer Science
and Communication

Master of
Computational and
Systems Biology

–
Master of
Media Management

–
Master of
Scientific Computing

[www.csc.kth.se/
utbildning/index.php.en](http://www.csc.kth.se/utbildning/index.php.en)

Study at KTH CSC

Exchange student or
Master's programme
of international standard
at KTH, Stockholm, Sweden
more info:
www.kth.se/studies?l=en



**KTH Computer Science
and Communication**

Exchange students at KTH

KTH, the Royal Institute of Technology, is a popular university for international students. Annually KTH receives approximately 1000 exchange students and 1000 international master's students.

The majority of the exchange students come from European countries, with Germany and France as the most frequent countries of origin. However, KTH also welcomes students from Asia, the US, Australia and Latin America every year.

Master's programmes in English

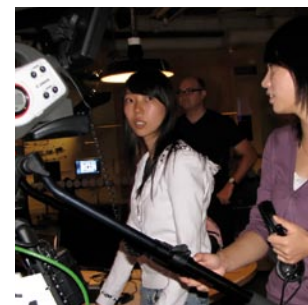
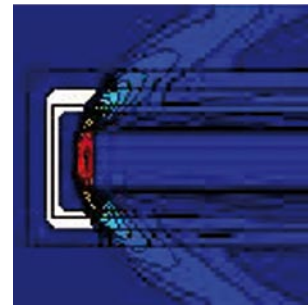
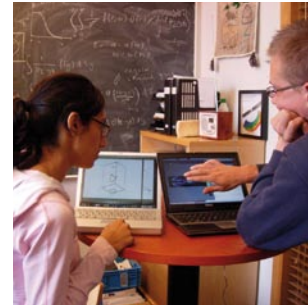
KTH offers a large number of master's programmes taught in English. They are open to both Swedish and foreign students with a Bachelor's degree or equivalent academic qualifications.

The master's programmes present students with excellent academic performance the opportunity to obtain a competitive Master's degree of the highest international standard.

The duration of the programmes at CSC is two years. Courses generally start in late August and finish in the beginning of June. The programmes consist of course work followed by a degree project. The number of students accepted to each programme is limited.

The master's programmes are currently free of charge, and KTH can assist with accommodation.

More info at:
<http://www.kth.se/studies/master/programmes/csc?l=en>



Master's programmes at KTH CSC

Master of Computational and Systems Biology

The programme gives students the knowledge, skills and networks to continue on entrepreneurial, engineering or research leader tracks to the biotech and pharmaceutical industries and academia in the post-genome and bio-simulation era. First-year courses and small-group mentoring in the programme are mainly from KTH Computational Biology, with a research base in Computational Neuroscience, Bioinformatics and Systems Biology.

Part of the elective courses and specializations are provided by the KTH School of Industrial Engineering and Management, by the Stockholm School of Entrepreneurship, and by the KTH School of Biotechnology.

• www.csc.kth.se/forskning/cb/cbp/

Master of Media Management

The programme in Media Management will provide students with knowledge and understanding of the multidisciplinary field of media management, encompassing media technology and its basic components as well as market studies, business development, organization and economics. The programme will provide students with not only a broad perspective but also in-depth knowledge of specific subfields including current research and development work.

This is a joint multidisciplinary programme between KTH, and SSE, the Stockholm School of Economics. Elective courses can be selected at both universities.

• <http://xml.nada.kth.se/media/>
• www.hhs.se

Master of Scientific Computing

Scientific computing is a multidisciplinary subject where large scale computer simulations are used to predict and understand different phenomena in science and engineering.

In this programme, students are provided with both theoretical and practical knowledge in the areas of numerical and applied mathematics with emphasis on numerical programming for high performance computing using parallel computers.

Specialisations can be chosen through the elective courses to areas such as Computational Fluid Dynamics, Biocomputing and High Performance Computing.

• www.csc.kth.se/na/

Info at: <http://www.kth.se/studies/master/programmes/csc?l=en>



**KTH Computer Science
and Communication**